

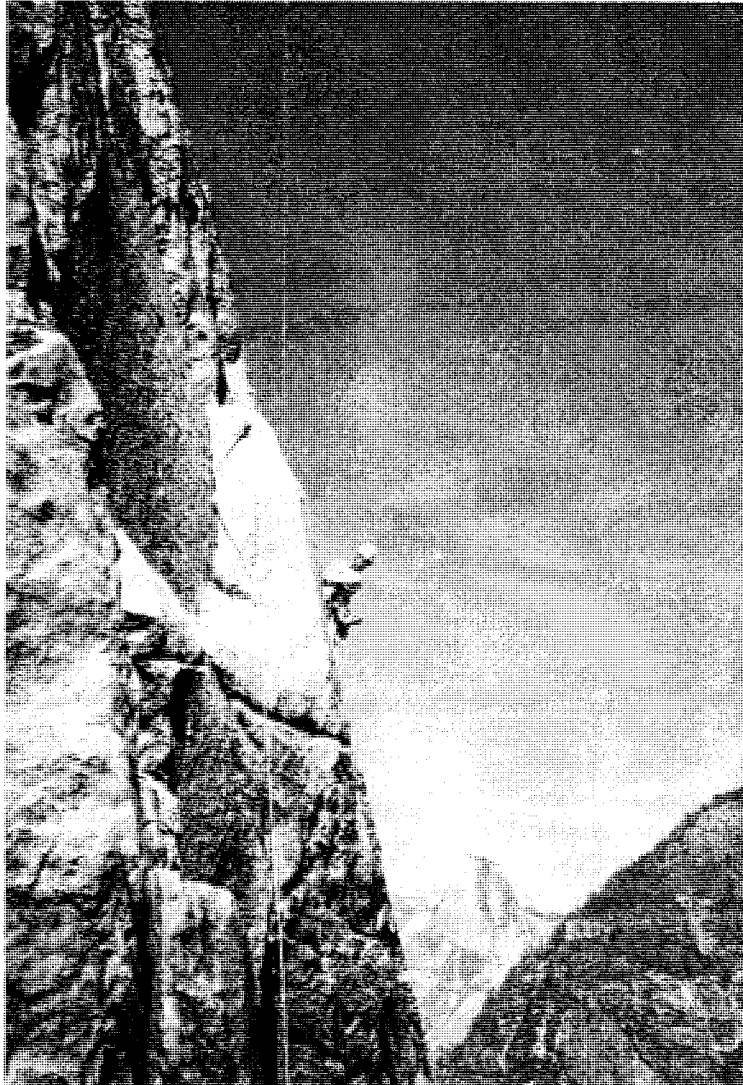
JUNE 2004

ARIZONA MOUNTAINEER

It is getting to be that time of year again when cool-er Yosemite beckons to Arizona's sweaty masses who must labor up hot rocks, cherishing each smidgen of shade they can find.

Unless, of course, they go on the Mt. Humphries or Mr. Elden climbs scheduled for June. That's cool.

This photo, from a year or so ago, is of Tim Schneider on The Pillar. Photo by Bill Wright



The Arizona Mountaineering Club

Meetings: The AMC normally meets the 4th Mon. each month (Nov. & Dec. meetings are usually the 3rd Mon.) at 7:00 pm at:

Los Olivos Senior Center, 2802 E. Devonshire Ave. Phoenix, AZ (28th St. just north of Indian School Rd.)

**Jul, Aug,
Sep meetings at
Pyle Center,
Tempe on 3rd
Monday**

Board Meetings: Board meetings are open to all members and are held two Mondays prior to the Club meeting at Los Olivos Center.

Dues: Dues cover January through December. A single membership is \$25.00 per year: \$30.00 for a family. Those joining after June 30 pay \$13 or \$15. Members joining after October 31 who pay for a full year will have dues credited through the end of the following year. Dues must be sent to:

AMC Membership Committee
6519 W. Aire Libre Ave.
Glendale, AZ 85306

Schools: The AMC conducts several rock climbing, mountaineering and other outdoor skills schools each year. Browse the AMC website or email info@azmountaineeringclub.org for information on schedules and classes.

For More Information:

Call (623) 878-2485
Email info@azmountaineeringclub.org
president@azmountaineeringclub.org
board@azmountaineeringclub.org
Website www.azmountaineeringclub.org
Mail Arizona Mountaineering Club
4340 E. Indian School Rd.,
Ste 21-164 Phoenix, AZ 85018

Board of Directors:

President Bruce McHenry 602-952-1379
Vice-President Jutta Ulrich 602-234-3579
Secretary John Keedy 623-412-1452
Treasurer Tim Ward 602-212-1929
Director 2-year Scott Hoffman..... 623-580-8909
Director 2-year Wayne Schroeter... 602-402-1631
Director 1-year Rich Kocher..... 480-966-5568
Director 1-year Erik Filsinger 480-314-1089
Director 1-year Lynn Readicker..... 480-970-1991

Committees:

Archivist..... Jef Sloat 602-316-1899
Classification..... David Larimer..... 480-425-9689
Elections..... Dave Van Hook 602-790-6283
Equipment Rental Gary Gerden 602-402-3271
Email..... Jeff Hatfield 480-783-8779
Land Advocacy.... Erik Filsinger 480-314-1089
Librarian..... Richard Kocher..... 480-966-5568
Membership Rogil Schroeter 623-512-8465
Mountaineering ... Erik Filsinger 480-314-1089
Newsletter Wally Vegors 602-246-9341
Outings..... Monica Miller 623-362-0456
Programs Sheri Kenley 602-242-0504
Training & Schools Wayne Schroeter.. 602-402-1631
Basic Class Sally Larimer 480-425-9689
Anchors Class.. Tom Conner..... 480-897-7623
Lead Class Mick Strole 520-586-3335
T-shirts..... Sally Larimer 480-425-9689

WebSite..... Kirra
webadmin@azmountaineeringclub.org

(0604)

The AMC Access Committee: The Committee works by itself and with the national Access Fund to maintain public access to climbing areas. If you know of areas that are threatened with closures or climbing restrictions, please notify the Access Fund representative Jutta Ulrich at (602) 234-3579.

The Access Fund: This is a national, non-profit, climber's organization that works to maintain access to climbing areas nationwide. Climbers can join The Access Fund by mailing an annual, tax-deductible donation of \$20 or more to: The Access Fund, P.O. Box 17010, Boulder, CO 80308, or giving it to the AMC Club Treasurer to be sent to The Access Fund in your name. A donation of \$20 or more is needed to receive *Vertical Times*, The Access Fund newsletter. One can also join

This Month in the AMC

- 2.....Who does what, addresses and numbers
- 3.....Birthdays; Index
- 4.....Board Meeting Minutes, New Members
- 5.....Discount Directory; Treasurer's Report; Rentals
- 6.....June Meeting is a BBQ and Swap Meet
- 7..... Oppose the loss of Queen Creek area!!
- 8.....Crux Climbing Shop Ad
- 9.....Babo, Still a Neat Climb
- 10....Babo contd.; Queen Creek: Sound Needed
- 11....Member's Comments; Scree
- 12....Outing List, Contd. ; Roommate Needed Ad
- 13....Outing Schedule; AMC Leader list
- 14....June Calendar

NOT STUPP!!

**HELP HEAD OFF A HUGE
THREAT TO ONE OF
ARIZONA'S BEST-KNOWN
CLIMBING AREAS:
QUEEN CREEK CANYON
AND THE OAK FLATS AREA.**

**DETAILS ARE LISTED ON
PAGES 7 AND 10 INSIDE.**

Newsletter

The *Arizona Mountaineer* is published monthly by the AMC. Members are encouraged to submit articles and photos about their climbing- or mountaineering-related activities. Submit items for publication (subject to approval) to AMC Editor, 6151 N. 8th Ave., Phoenix, AZ 85013 or through email to azmountaineer@azmountaineeringclub.org. Prints are preferred over slides. Digital photos should preferably be in JPG format and at least 300 dpi. Articles can be in any standard word processing format. For more info call the editor at (602) 246-9341.

Advertising in the *Arizona Mountaineer* is accepted, subject to approval, at the following rates. Personal ads are free to members. Business ads are \$5.00 for a business card, \$10.00 for half page, \$20.00 for full page, and \$25.00 for inserts.

July Deadline: 19 June 2004

Library

You must be an AMC member; i. e., your name must be on the most current membership list.

The circulation period is one month. Materials are due at the next general club meeting. The overdue fine is \$2 per title per month. Please contact the librarian if unable to return your books and tapes.

The circulation limit is three titles per person. One of these may be a videotape, for which a \$50 deposit is required. Each guidebook requires a \$25 deposit.

JUNE BIRTHDAYS

Shawn Swenson 2, Dana Dumins 3, David Hansen 5, Lisa Polacheck 6, Nancy Birdwell 8, Ryan Braasch 9, David Johnson 11, Sonia Overholser 11, Scott Parsons 11, Lynn Readicker 11, Alex Bonham 13, Karen Schneider 14, Eric Glass 15, Thu Duong 17, Stacy LaFrance 18, Charlene Todd 18, Karol Harvey 21, Tom Kirsch 25, Jeff Harvey 26, Bill Campbell 28, Lynne Hulvey 28, Dave Tanton 28, Bill Van 28, John Fritz 30, Gabriel Howe 30, Tiina Perlman 30

Minutes of the AMC Board Meeting: 10 MAY 2004

Board Members Present – Erik Filsinger, Scott Hoffman, John Keedy, Bruce McHenry, Lynn Readicker, Wayne Schroeter, Tim Ward

Committee Chairs Present – Wally Vegors

Members Present – Clay Vollmer

Visitors Present – Ted Gartner, Connie Gartner

Meeting called to order at 7:10 with quorum present.

Ted and Connie Gartner and Clay Vollmer, representing Friends of Queen Creek, briefed the Board on their organization, their goals and purpose. Briefly stated, the Friends of Queen Creek is not opposing mining, but rather the type of mining that is proposed as well as opposing land swaps for the purpose of allowing mining operations to have a free hand in all matters. They made a request of the Board to run informational articles in our newsletter and on our web site.

Motion made, seconded and carried to approve minutes of April Board meeting as published.

Motion made, seconded and carried to approve Treasurer's Report as submitted.

Presidents Updates:

A. AMC membership is now 358

B. Board goals – no new job descriptions.

C. Outing Leader Career Path – discussion concerning proposal submitted by Wayne Schroeter for Outing Leader Career Path Training. Motion made seconded and carried to adopt the proposal submitted as an official AMC training program with the training outline being an interim document subject to change as needed.

D. Documents on web site – eleven documents were recently reviewed by Bruce, Erik and John for inclusion on the AMC web site. With the documents already on the web site, we now have an inclusive and exhaustive public publication of AMC Club governance documentation.

Old Business

A. Newsletter – Wally expressed appreciation for all the folks who come early to the membership meetings to collate and fold newsletters.

B. Budget item – Outing Leader incentives was previously categorized under Training and Schools Budget as T-Shirts and Incentives. Motion made, seconded and carried to create a new line item under Classification, to be Incentives, splitting the budgeted \$1000.00 into two \$500.00 line items. Classification Budget would have three sub items, Certification -

\$500.00, Incentives - \$500.00 and First Aid Renewals - \$500.00. Bruce will inform membership at next meeting.B

New Business

A. Programs – Sherri has communicated that the Club should have a digital projector as many of the presentations are now computer based rather than slides. Bruce will investigate and bring proposal at next Board Meeting.

B. T & S Committee Minutes were presented and discussed.

C. Web Site – It was noted that the Access Area is obsolete. Bruce will instruct Kirra to update that area.

D. IRS Annual Filing – Tim discussed the IRS filing that is due on May 15, 2004.

Other Business and Committee Reports

A. June AMC Board meeting will be at The Monastery. June Membership Meeting will be a Swap Meet at South Mountain Park.

B. Meeting Adjourned at 8:55 PM.

NEW MEMBERS

Karl Anderson
Julian Blum
Debra Carpenter
Deborah Fuentes
David McClintic

Discount Directory

The following merchants currently offer a discount to AMC members:

Arizona Hiking Shack—11645 N. Cave Creek Rd., Phoenix, AZ 85020, (602) 944-7723. Show your AMC membership card and get a 15% discount.

Az on the Rocks Gym — 16447 N. 91st St., Scottsdale, Az.85260. 480-502-9777. Gym membership 10% off for AMC members.

OvertheCrux —2655 W. Guadalupe, #4, Mesa, Az 85202. 480-890-0997. 15% off to AMC members.

Solid Rock Gym — 23620 N. 20th Dr, Phoenix, Az 85027 (623) 587-7625 Gym membership 10% off for AMC members.

Rental Equipment

EQUIPMENT.....	Qty	\$Dep	1-3day	4-7day
4-season 2-3 man.....	1	58	18	29
4-season 1 man bivy.....	1	45	14	23
Sherpa Snowshoes.....	5	50	15	25
MSR Alpine snowshoes.....	3	32	10	16
Ski poles (var. sizes).....	3	12	4	6
Hiking Poles.....	3	22	7	11
Ice Crampons.....	5	26	8	13
Ice axes (70 cm).....	4	16	5	8
Ice axes (90 cm).....	5	14	5	7
Snow shovel.....	1	8	3	4
Snow pickets.....	3	4	1	2
MSR Multifuel Stove.....	1	17	5	9
Haul bag.....	1	25	8	13
PortaLedge.....	1	100	30	50
Climbing shoes.....	Various sizes .. Call			

Equipment Rental Guideline: Your name must be on the most current membership list. Deposit required; varies by item; generally \$20-\$50. The two-personal-checks system works best. Advance reservation suggested. If not using the reserved equipment, please call and cancel. Call Linda Locke at (602) 997-4235 for shoes. For everything else, call Tom Burmer (480) 354-1392.

Treasurer's Report

Statement of Operations
01Jan 04 Thru 9 May 04

Category Description	Amount
INCOME	
Advertising.....	140.00
Dues.....	6,689.00
Interest.....	0.00
Library fines.....	0.00
Merchandise (Tee Shirts & Etc).....	385.00
Mountaineering Schools.....	400.00
Program Income.....	30.00
Rental Income (incl shoes).....	135.00
T-Shirts.....	490.00
Training.....	8,300.00
TOTAL INCOME	16,184.00

EXPENSES

Access.....	0.00
Administration.....	395.46
Bouldering Contest.....	300.00
Capital Exp (mntnrg).....	0.00
Classification.....	0.00
Equipment Maint.....	63.00
Insurance.....	0.00
Library.....	40.00
Merchandise Exp.....	0.00
Mountaineering.....	70.57
Newsletter.....	1,242.40
Outings.....	0.00
Programs.....	3,131.17
Service/Bank Charge.....	32.88
Training.....	6,051.78

TOTAL EXPENSES 11,327.28

OVERALL FOR YEAR TO DATE 4,856.74

ACCOUNT BALANCES (9 May 04)

CD Account.....	5,235.71
Savings.....	1,668.32
Checking.....	13,447.42.

TOTAL CASH ASSETS 20,351.45.

OTHER ASSETS (Club gear mainly) 5,120.25

OVERALL TOTAL 25,471.70

SWAP MEET AT SOUTH MOUNTAIN

28 JUNE 2004

Barbarians bring something dead to sear over the charcoal provided by AMC. (You others enjoy your cold tofu.) AMC will also have a beer permit so if you brought some you will not be cited for possession, at least. Parks does not issue permits for most varieties of idiocy, however, so behave yourselves.

Sort through your gear — climbing, camping, cycling, diving, canoeing, skiing, skateboarding, and, uh, like that — find anything someone else might find useful. Mark a modest price on it and bring it to sell or swap for other neat junk.

Directions — down Central Ave. into South Mountain Park. Look for directions posted near the entrance station as to which ramada we will be in.

The trouble (and the fires) begin at 6:00. There may be a brief business meeting around 7:00 (something about spending money) if President Bruce deems it meet and right and politic to call one. Otherwise, let sybaritic excesses or liaises faire commercial greed (your choice) have free reign until 9:00, when they kick us all out.

Members page — Comments by Wally (Ed).

The Advertisement below is something of a departure for the AMC. Yes, we have exhorted members to make their wishes known at council meetings and forums (*and thank you for that*). AMC's reps on various councils and commissions have stated a club position in access issues. Individual AMC members have asked for support for causes ranging from decrying the Taliban's savage treatment of Afghan women to giving wolves and mountain lions a chance. But now is about the only time that I can recall that the AMC has directly urged all members to sign on for a cause — saving access to climbing in the the Oak Flat/Queen Creek area.

We have lost favorite climbing spots in the past — The Bolus on Camelback, the Care-free Boulders (sob!), Pinnacle Peak (for years,

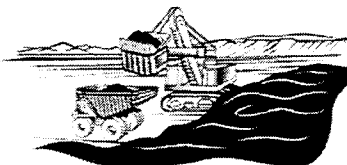
although we now have *restricted* access to *some* of it). Other threats loom — Little Granite Mountain, the North McDowells, and Arizona. State Land in general.

But the Oak Flats/Queen Creek area is a treasure, so much so that an entire, thick guidebook has been produced to list and describe its hundreds of climbs. The Phoenix Boulder blast and its precursors have held nearly twenty years of competitions there, involving thousands of climbers. On any day you will find rock rats of all persuasions and skill levels, from many states, testing themselves in the canyons and on the boulders. There are still hundreds of potential climbs waiting to be done. It is an climbing area worth fighting for. For this reason the AMC board has approved publishing the ad below at no charge. Read it. Heed it!

NOTE: See page 10 for late developments.

Queen Creek climbing area access issue

Climb it? Or mine it?



Recreational access to the Queen Creek climbing area is being threatened by a copper mine that has been proposed by the Resolution Copper Company.

Resolution Copper is trying to take over Oak Flat campground via a congressionally legislated land swap, which in turn would threaten access to all these areas: Queen Creek Canyon, Apache Leap, Devils Canyon, Hackberry Canyon, etc.

We need your help to keep this world-class climbing area (and home of the Phoenix BoulderBlast) from disappearing forever into a big hole in the ground. Join the Friends of Queen Creek!

We are not opposed to mining. But we are FOR ACCESS! We need to make Resolution Copper develop their mine in such a way as to preserve recreational access to these public lands.

Be a Friend of Queen Creek. Act now to help preserve access to your public lands by subscribing to the Friends of Queen Creek FREE e-mail action list at info@friendsofqueencreek.com

www.friendsofqueencreek.com

The AMC is represented on the Steering Committee of Friends of Queen Creek.



Arizona Hiking Shack
11649 N. Cave Creek Rd.
Phoenix, AZ 85020
Phone: (602) 944-7723
www.hikingshack.com

We're located 1/8 mile south of Cactus
on Cave Creek Rd.

Three great reasons to shop at the Arizona Hiking Shack for all your climbing gear

1. The Arizona Hiking Shack has **IN STOCK** the largest selection of climbing gear in the Valley. Petzl, Metolius, Black Diamond, Misty Mountain, Omega, DMM, 5-10, Scarpa, La Sportiva, Yates, PMI, Sterling, 2-Cam, Climb Tech, Kong, Trango, Camp, Mammut, Boreal, Pica Mountaineering, and Trango are just a few of the brands we carry. If we don't have what you need in stock. . . we'll order it for you. . . with FREE shipping!

2. The **staff** at the Arizona Hiking Shack **are climbers** too. You get knowledgeable, friendly advice on gear, places to climb, and the absolute best fit on harnesses, shoes and helmets. The Arizona Hiking Shack is locally owned and has been selling gear to valley climbers since 1972. We take pride in helping to select the right hardware for your climbing adventures. (Besides most of us are AMC members also!)

At the Arizona Hiking Shack, **AMC Members get a 15% discount** on everything they buy, everyday of the week, every week of the year. Why? Two Reasons. First, we respect the job the AMC does. The AMC not only teaches people how to climb safely, they also teach an ethic of responsibility to the outdoors that is essential to keeping our climbing areas open. Second, you learn to climb in the valley. . . well, like it or not. . . we consider you one of OUR homeboys or girls and simply said, we want your business! Ultimately, we know you have many choices when it comes to purchasing your equipment and by having a great selection of gear, a knowledgeable staff, and totally killer deals, we hope you'll come shop with us.

A REALLY NICE CLIMB — BABOQUIVARI

The following was not intended as a story for the AMC Newsletter; some of you who are on Erik's mail list have already seen it. But most AMC'ers have not. I am printing it here since it describes what I consider one of Arizona's classic and most enjoyable climbs. It is definitely a climb but, competently led, it is within the capabilities of most all of us. Paul Norberg has led annual pilgrimages to Babo for several years. Sign on if you can next time it is offered.

Just a little beta from a great weekend trip.

Dan Bolin, Maria Stoianova and I summited Baboquivari via the South East Arete. What a fine route, consistent with many alpine experiences I've had, and maybe some I've dreamed about.

Here is a quick recap, and I would be happy to entertain questions, especially because conditions will soon be too hot for a pleasurable experience this year I fear. What follows is the Western approach across tribal lands. We experienced trails and roads in good conditions, as well as Native American festivities at the campground. All good stuff.

(I'll assume you can follow road map descriptions to the turn off pavement onto the dirt road leading toward Babo). To be honest, we got lost once on the dirt road portion. There are no signs now. You must do the following. Go down the first, main dirt road for a period until you reach the first major right-hand option. It appears to head straight for Babo, and then veers southeast of Babo, or so it seems. Actually it turns back northeast into the Campground. (check guidebook directions, they are right on.)

The trail to the saddle is in excellent shape. We hefted backpacks and 4 liters of water for an overnight stay on the saddle. Maria's roommate Bea joined us, acting as Base Camp manager. (maybe someday she can even join the rock climbers of the world through an AMC basic rock class, but she held up marvelously in her appointed role). It would appear that one can easily find good campsites in and around the saddle area, so I won't tip my hat as to my favorite, but it was sure nice. Clear sky, rocky seats with a view, a little gin and tonic and then a dozen shooting stars for those of us (me) sleep challenged.

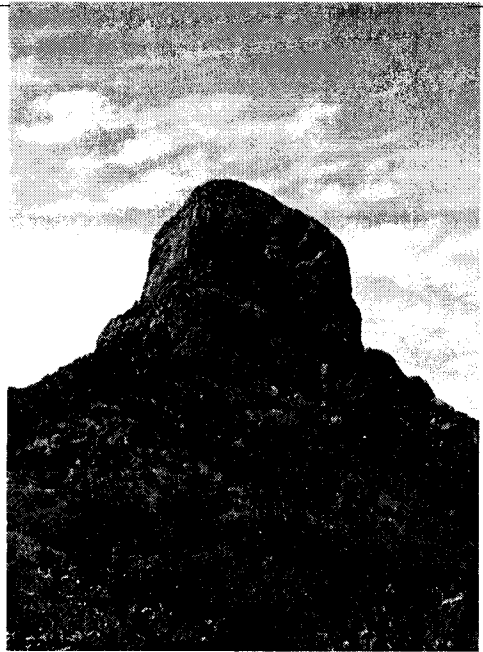


Photo by Kathy Granger

Just before sunrise, we took the trail up to the slabs of the Forbes route, and proceeded along Lion's Ledge. On the south side just before the end of the ledge system, there is a major indentation into the regularity of the cliff, and just before that there is a crack system rising upward. It seemed like the obvious route, so I won't elaborate more. It had a tricky move or two, and then a run out across lower angle terrain. Dan led the first pitch while Maria and I came as separate seconds. This would appear to be the same basic low angle terrain one would enter from the northern approach on Lion's Ledge.

I swung on up the second pitch to an obvious notch atop the obvious 4th class chimney, with Maria clipping through behind. Dan led through and on up the vertical wall and further for about 120 feet, maybe to the base of the laid back headwall with a layback series of flakes right of the crest of the broad arete. Again, in my opinion, obvious route finding. This pitch was identified as the crux, and probably only the crux in terms of the more continuous 5.6-ish type of terrain.

(Continued on page 10)

Babo — from page 9

Dan was standing in a bit of a chimney situation, and when Maria and I arrived I swung past a tree and onto something I guess I would loosely call a ledge. At least it sloped around the corner to the left, so I figured the two bolts were just out of sight. It would have been tempting, especially for better climbers just to keep on the arete, but it was actually a lot easier ground when I just stuck my nose around the corner. Lots of exposure and slight downclimbing moves that reminded me a little of the start of the third pitch on the Mace. Short but sweet.

Dan then finished off the obvious 5.3 dihedral to a good belay just above. We coiled our ropes into Kiwis to move up to the final notch. Downclimbing was much easier from an exposure perspective than I would have anticipated because the notch is huge, basically a large group could camp comfortably on and around it. Dan completed his yeoman work for the day by scampering up the loose blocks on the left side of the notch. He muttered something about the "questionable pro" he used but he was quickly out of sight. When I came up last, I saw what he meant. He had slung a 1/2 inch bush about 6 inches tall. Now I know what Jeff Lowe talked about as a "delay" versus a "belay". Anyway we quickly descended the Forbes route back to camp. Please note that the whole ascent route is also fixed with rap stations and gear, though I would bring some slingage in case any is missing. You can rappel from trees, and the two bolts pretty easily with two ropes.

Great leading, Dan. Way to go Maria, for your first long rock multipitch, and thanks Bea for keep the (not literally) camp fires burning.

Cheers, —*Erik F.*

NEW STORE IN MESA

Despite a tough business climate for independent shops these days, a new one has opened at 2655 W. Guadalupe in Mesa. Stop by, check them out, wish them well — and buy something.

Fresh Info on Queen Cr/Oak Flats

AMC's Land Advocacy Chairman, Erik Filsinger, has sent out an electronic alert to AMC's on-line membership asking that immediate letters be sent to Rep. Renzi opposing an in-the-works land swap with Resolution Copper.

For background information check the "ad" on page 7. You may also go to www.FriendsofQueenCreek.com.

Erik cautions letter writers to be reasonable, respectful, and factual — intemperance costs credibility. Responsible mining is necessary. But the "block caving" method proposed for Oak Flat/Queen Creek has the potential to destroy the area for all recreational uses, birding, mountain biking, camping, hiking as well as climbing. Erik as a draft letter to begin with. Copies are available at this meeting. Address:

The Honorable Rick Renzi
United States House of Representatives
2707 S. White Mountain Road, Suite E
Show Low, Az 85901

While you are at it, send letters to Gov. Janet Napolitano and your own district representative.

Sound System Assistance Needed

We've kicked around the idea of getting some type of sound system for the AMC schools, so that the lead instructors don't have to YELL to be heard above all the noises at the parks where we hold classes.

Is there anyone out there who has experience with sound systems that could help investigate this idea? It needs to be portable, since it travels to and from classes. It should be easy to set up, since it would be used by amateurs! It should have at least one wireless hands-free microphone (but two would be nice for Basic school) and it should be usable outside.

If you have any experience with sound systems at all, please contact Sally Borg Larimer to talk more details: 480-425-9689. We'd like to explore some options and present it to the AMC board as a possible budget item for 2005.

— *Sally Borg Larimer*

When good enough is - just that!!!

I've been an AMC member for over 7 years, during which the club has introduced many changes.

As we categorize the clubs functions more and more I feel it steers away individuals volunteering to ultimately better the club. I understand there are safety issues. But it seems to me we are going beyond that.

Many of our members are in formal work scenarios. They are accustomed to a formal ladder of checks and balances. This work in a corporation. But I don't feel you should run a volunteer organization as you would a company. People participate because it is fun and they enjoy the freedom of the club. The reason so many of us are climbers is because of the freedom we feel while climbing.

In a perfect world it would be ideal to have a contingency plan for most situations. But I feel in a volunteer climbing club you need to allow a certain amount of freedom for individuals to try new ideas at their own pace.

It is how we have come to where we are now. And we won't be any worse off than we were before. If it does not work out- OH WELL!!

There are many instances when good enough is just that!!

— Mick Strole

NOLS First Aid Course

A ten-day First Responder Course will be held August 20-29 in Flagstaff. It is part of the Wilderness Medicine Institute under the National Outdoor Leadership School (NOLS). Tuition is \$525. More information: pete_walka@nols.edu or 975 N. Manzanita Wy, Flagstaff, 86001. Phone 928-779-0061.

AMC has had no dealings with Mr. Walka but assumes a NOLS course may be of interest to some of our members. AMC's advanced first aid training for members has been through another firm for several years. None is scheduled for the moment. — Ed.

SCREE — BY Wally

Mick and Sherrie are long-time AMC'ers who have played a very active role in club affairs. He has headed up our Lead Classes for some time. So when Mick and Sherrie express dissatisfaction, as in the adjacent column, others should listen well.

It does seem that AMC gets more deeply embroiled in matters involving training and risk management and that the board's chief activity nowadays is constructing new hoops that everyone must jump through. I know other clubs are experiencing the same pressures and frustrations. When I stopped by the Mountaineers of Seattle with my list of things I wanted advice on, the reaction was "Yeah, that is on our list too. Got an answer?"

If it is any consolation, know that processes are ten times as labyrinthine in government, based on my experience in historic preservation work. AMC is free as a bird, relatively. But still, we are much more regimented as to what we feel we should do, when dealing with other AMC members, than even a few years ago.

I think these pressures may be having an adverse effect on the number of outings we offer. It seems to me that rather than inviting one and all to a climb and making a party of it for the good of the club, we tend to limit the group to a very few whom we know well. It would be a bit more trouble to open it to all, and that would help the club, but — leadership and safety responsibilities weigh in one's decision.

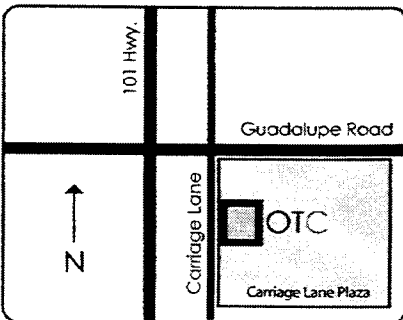
A committee has been working on a questionnaire that was intended to go to our list of lapsed members, asking "How Come? How can we improve the AMC?" It may be that we should broaden it to include current members too. I personally know some much valued people have dropped out mainly because of the "folderol", and I lament their going. But in the meantime —

If you have thoughts or suggestions on how to "loosen up" the club and help revive/enhance the sense of fun and camaraderie we may be in danger of losing, write me a note or send an e-mail. My address is in the front. My personal e-mail address is [<wvegors@cox.net>](mailto:wvegors@cox.net) which does not go through the club's website — if that matters to you. I'm looking for thoughtful ideas. Help AMC out! I'll print as many as I can. — Wally

ATTENTION AMC MEMBERS!



CONVENIENT EAST VALLEY LOCATION



www.overthecrux.com

overthecrux
climbing gear & accessories

2655 West Guadalupe Road Suite 4
Mesa, Arizona 85202
(480) 890-0997

Located in the Carraige Lane Plaza shopping center

Calendar of Events *(Continued from page 14)*

See Billboard and Commercially Provided sections for non-AMC ice and snow opportunities.

****Cancellations:** Please keep in mind that most outings have limits and that there is usually a waiting list to attend. Call at least 24 hours in advance to cancel. Courtesy dictates that you be on time for the outing, and that if you are sick or an emergency occurs the day of the outing, call the Outing Leader so the group doesn't lose time waiting on you. To request outings: Call the Outings Chair, Monica Miller, at (623) 362-0456.

Billboard—Other Scheduled Events

Outings listed in this section are not AMC sanctioned outings. Any AMC member can list an event he or she is planning and which is open to other AMC members. The member does not have to be an approved AMC Outing Leader. If you wish to participate you should be physically and mentally prepared with the appropriate gear and should contact the member planning the outing. You are responsible for your own safety, not the person leading the outing. You should always be aware of the risks involved in outdoor activities and conduct yourself accordingly.

Wednesdays North Mountain Hikes after work. Rogil Schroeter (623) 512-8465 or Oct 11

Commercially Provided Training and Events

The events listed below are provided by commercial outfitters for the benefit of AMC members. They are not AMC Outings, nor are they led by AMC Outing Leaders, though they may be open only to AMC members. The commercial outfitter is solely responsible for all aspects of the outing, not AMC. While, in most cases, an AMC member may provide a service by AMC collecting the names of prospective participants and handling the logistics of out-of-town events, participants will sign up directly with the commercial outfitter.
(none listed)

Female Roommate Needed, 3-4br/2bth, 37th Ave. and Cactus, diving pool, 2 driveways, covered secure porch, funky house! EZ access to I-17, Metro Mall, ASU West. \$350-400/mo, utils included. Length of stay and rent negotiable, move in ASAP or this summer. I took the basic climbing course in March if you remember me! (Nicole Arihood) If you're interested or know someone that is, contact me at narihood@fesd.org or 602-434-7416.

Zen-Lizard Systems Presents

X-Chalk

The world's first rock climbing chalk that soothes hot and ripped up fingers —as you climb! Also helps heal cuts and scratches. All natural —no chemicals. Available at the Phoenix Rock Gym, Climbmax, the Arizona Hiking Shack, and online at:

<http://www.zen-lizard.com>



Calendar of Events

AMC Outings

Participation in AMC outings requires club membership. Outings vary in degree of danger. When you participate in an outing you should be both physically and mentally prepared and equipped with the appropriate gear. You should always be aware of the risks involved in outdoor activities and conduct yourselves accordingly. The Outing Leader is not responsible for your safety; you are. Please contact the Outing Leader before going on an outing, discussing your capabilities with the Outing Leader. You must be over 18 years of age to participate, or must be accompanied by a parent or responsible adult, and obtain prior consent from the Outing Leader. Those accompanying minors are responsible for the minor's safety.

- May 28-Jun 1 **Indian Creek, Utah** (Memorial Weekend) Big Racks and long cracks....! Outstanding sandstone climbing in a beautiful setting. Contact: Richard Horst 623-434-4769 or horstrichard@aol.com for specific driving and camping directions.
- June 5 **The Overlook**, Sedona. Limit 12. E-mail signup only at jwkeedy@cox.net. Meet at I-17 & Bell Denny's. Depart sharply at 6:30 a.m. John Keedy.
- June 12 **Mount Elden**, Flagstaff. Climb (5.6-5.10) in cool Flagstaff. Camping Sat. night optional. Meet behind the Denny's at I-17 and Bell at 6:30 am. No limit, no reservations, just show up. Cancelled if the Coconico Forest is closed for fire restrictions. Tom Conner connner_tom@hotmail.com.
- June 13 **Humphreys Peak**, Flagstaff. Hike to the top of Arizona's highest peak. Roundtrip 9-miles, 3800 ft elevation gain takes about 6-hours. Meet in the lower parking lot of the Snow Bowl (just north of Flagstaff off of Hwy 180) at 8:00 am to begin the hike. No limit, no reservations. Cancelled if the Coconico Forest is closed for fire restrictions. Tom Conner connner_tom@hotmail.com.
- Jun 19 **The Promised Land**, Chino Valley. Beautiful canyon setting with fun sport routes from 5.7 to 5.11. Limit 12. Frank Vers 480947-9435 (hm).
- July 10 **Paradise Forks**, Flagstaff/Williams area. Limit 12. E-mail signup only at jwkeedy@cox.net. Meet at I-17 & Bell (Denny's); depart sharply at 6:30 a.m. John Keedy.

(Continued on page 13)

Outing Leaders

Requirements for becoming a leader: take the Basic, Anchors and Lead classes (or equivalents), be a member for at least one year, complete a basic first aid and CPR class (8 hours or more), and be approved for leadership by at least five current leaders through formal application process and by the Board of Directors. Contact Dave Larimer at (480) 425-9689.

Tom Conner.....	480-897-7623	David Larimer	480-425-9689	Rogil Schroeter	623-512-8465
Erik Filsinger	602-906-1186	Sally Borg Larimer ...	480-425-9689	Wayne Schroeter	602-402-1631
Jeff Hatfield	480-783-8779	Tim Medlock.....	719-494-1171	Jef Sloat.....	602-316-1899
Scott Hoffman.....	623-580-8909	Jeff Nagel.....	602-318-9538	Mick Strole.....	520-856-3335
Richard Horst.....	623-434-4769	Paul Norberg	602-808-9244	Rick Taylor.....	623-487-8507
David Johnson.....	623-486-7387	Paul Paonessa.....	602-493-7356	Frank Vers.....	480-947-9435
John Keedy	623-412-1452	Chris Query.....	602-323-5927	Tim Ward	602-212-1929
Tim Lange	480-598-9124	Tim Schneider	480-497-8377		

June 2004

AMC OUTING CALENDAR

Sun	Mon	Tue	Wed	Thu	Fri	Sat
		1 Indian Creek Utah	2 Sunrise 5:19 Sunset 7:34 M-set 4:38am Full Moon	3	4	5 The Overlook
6	7	8	9 Sunrise 5:18 Sunset 7:38 M-set 12:18p Last Qtr	10	11	12 Mt. Elden
13 Mt. Humphreys	14 AMC Board Meets At Monastery	15	16 Sunrise 5:18 Sunset 7:40 M-set 7:07pm	17 New Moon	18	19 Promised Land
20	21	22	23 Sunrise 5:19 Sunset 7:42 M-set 11:54p	24	25	26 First Qtr
27	28 AMC Swap Meet and BBQ	29	30 Sunrise 5:22 Sunset 7:43 M-rise 6:21p		Full Moon	

Arizona Mountaineering Club
4340 E Indian School, Ste. 21-164
Phoenix, AZ 85018